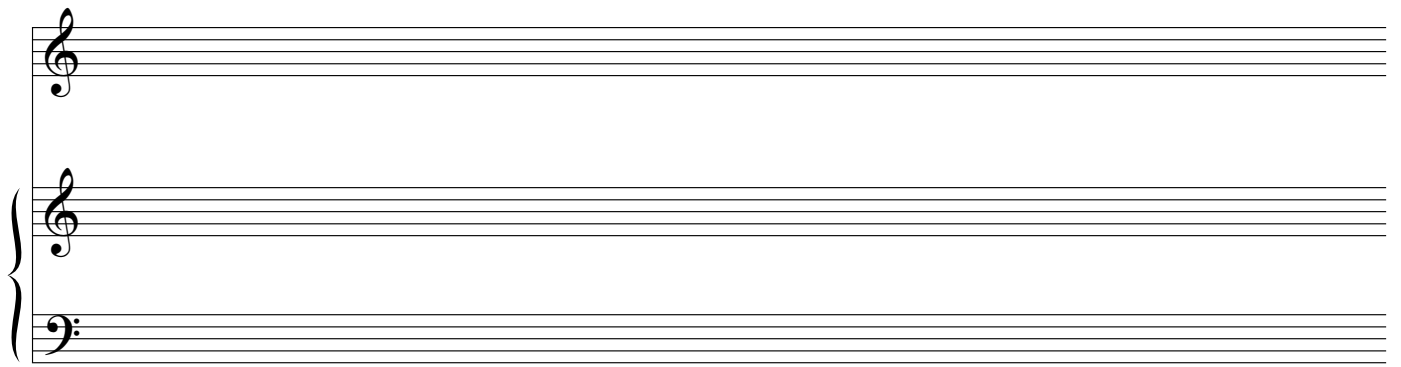
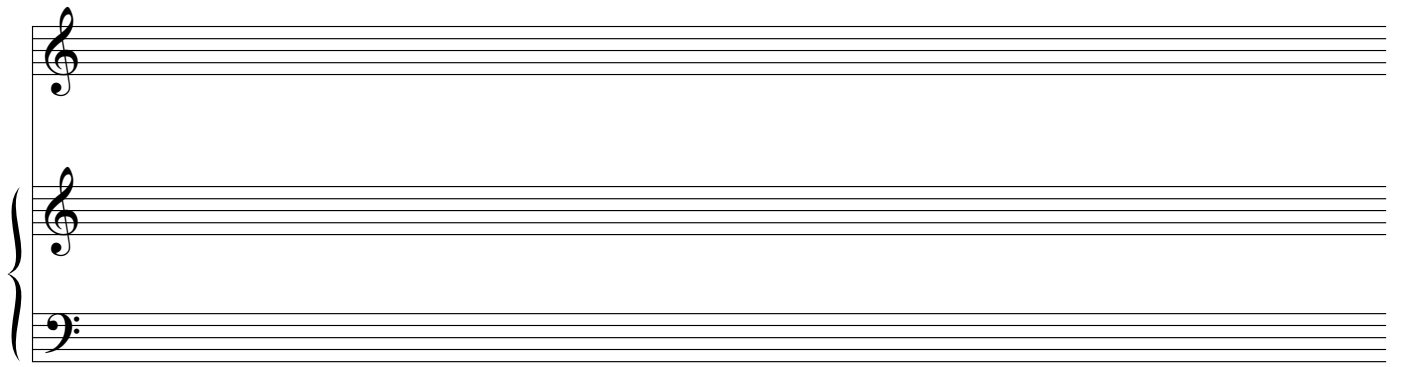
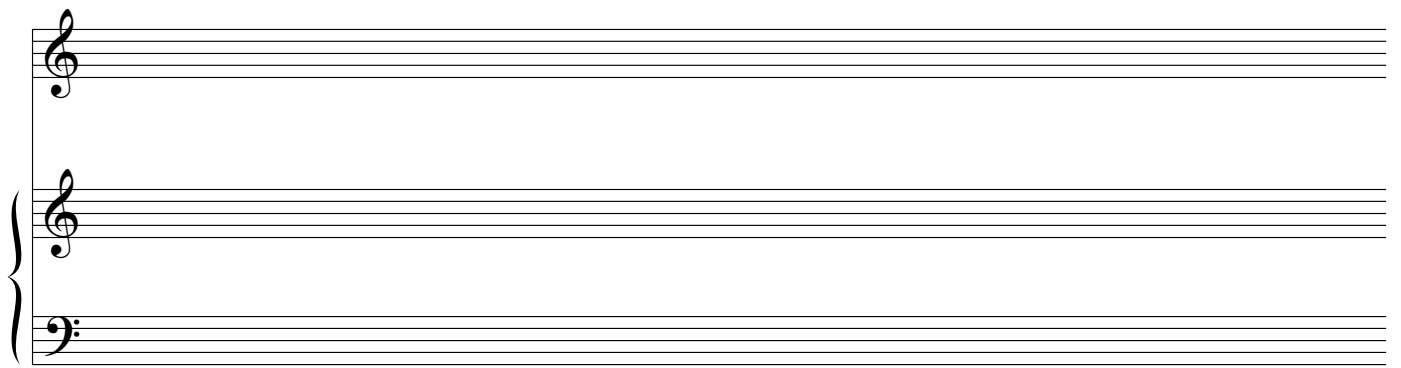
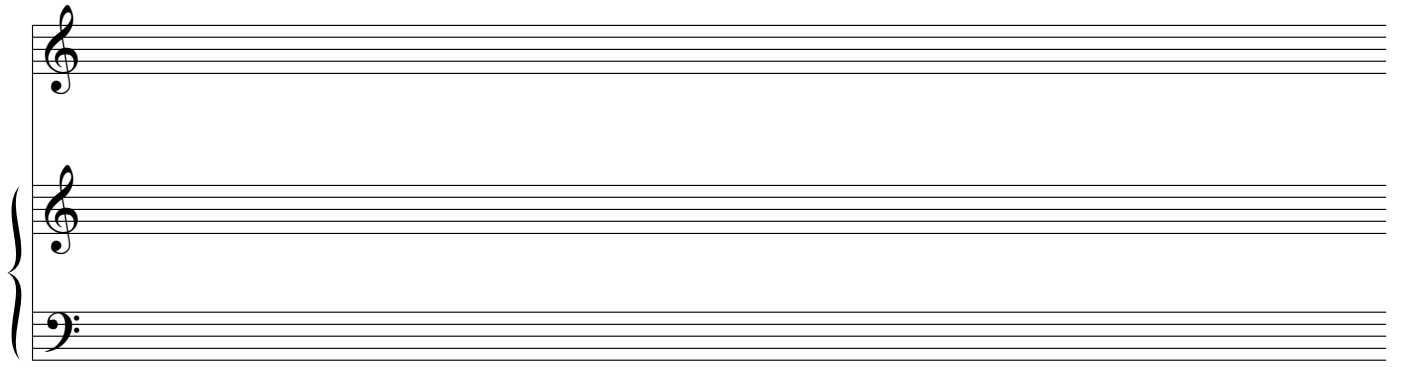


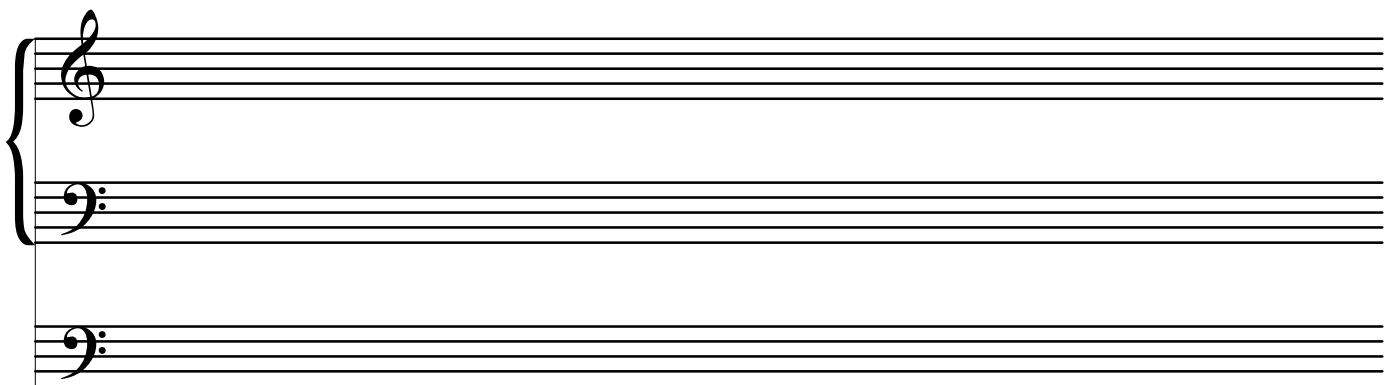
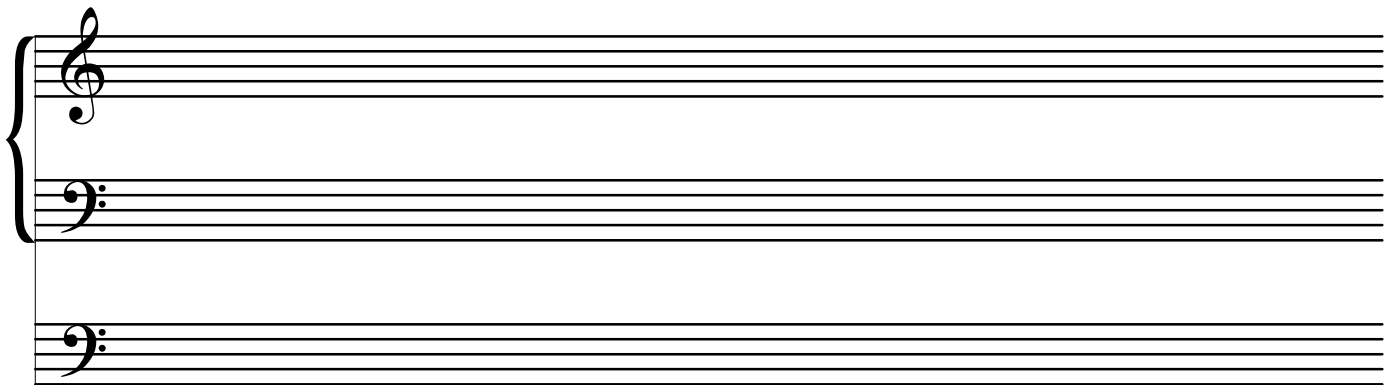
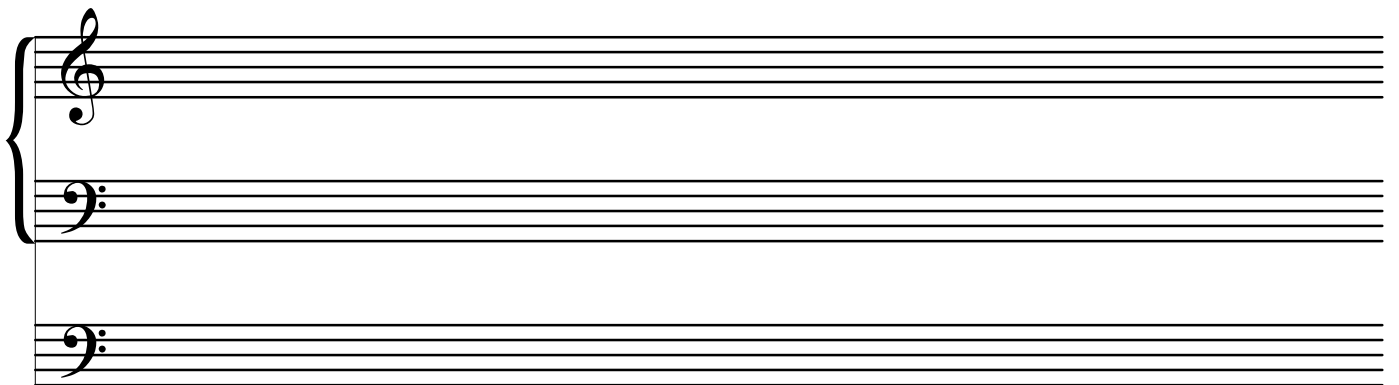
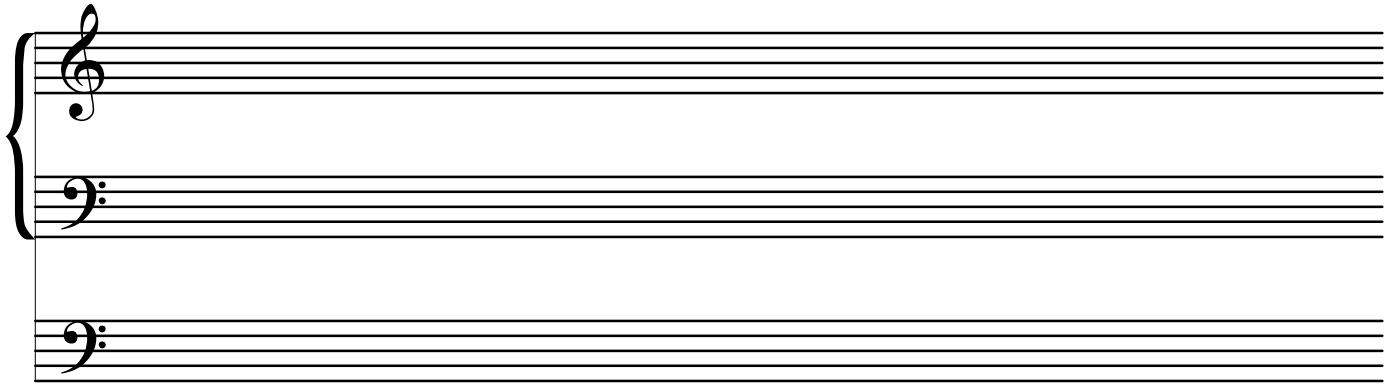
A system of four musical staves. The top two staves are empty. The bottom two staves are connected by a brace on the left and contain a treble clef on the top staff and a bass clef on the bottom staff.

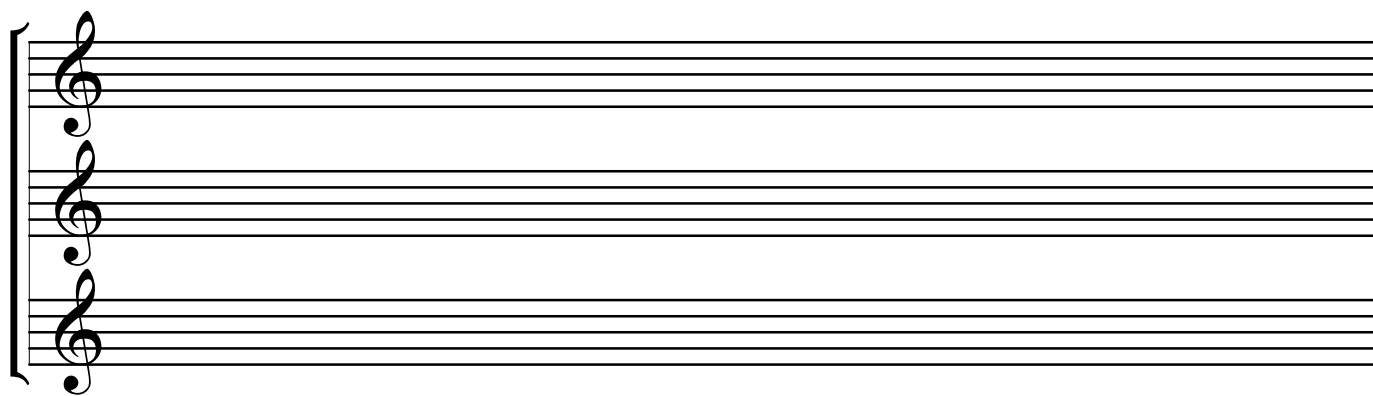
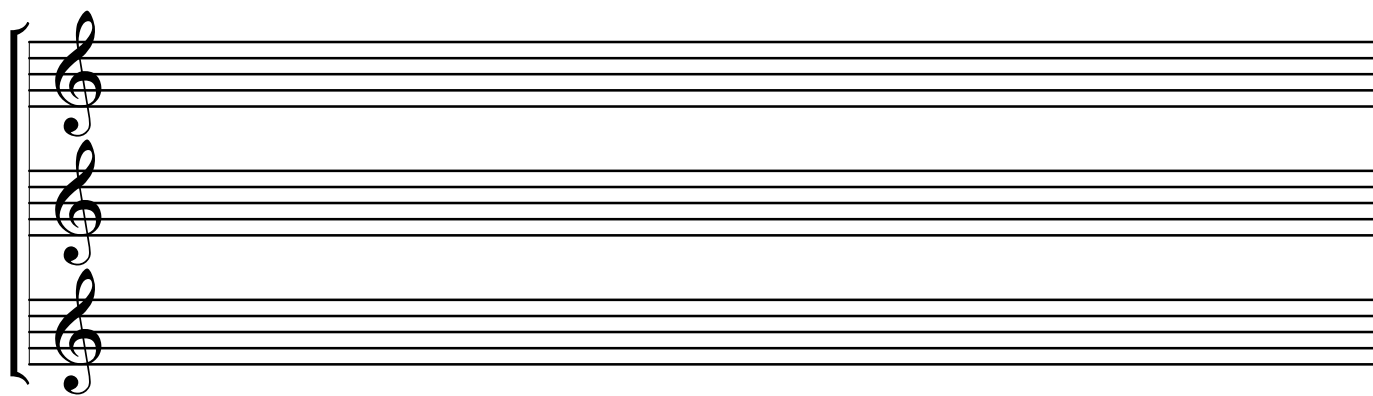
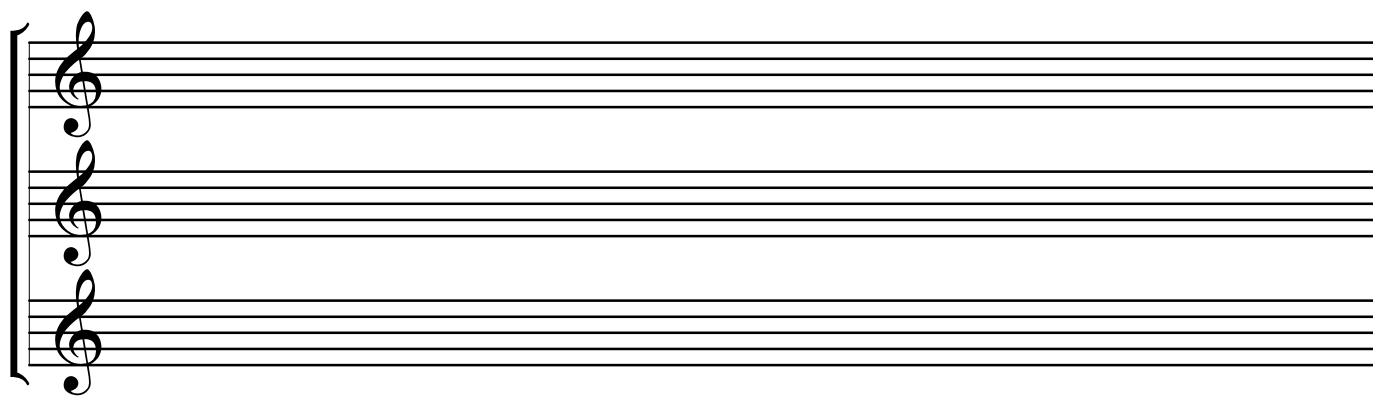
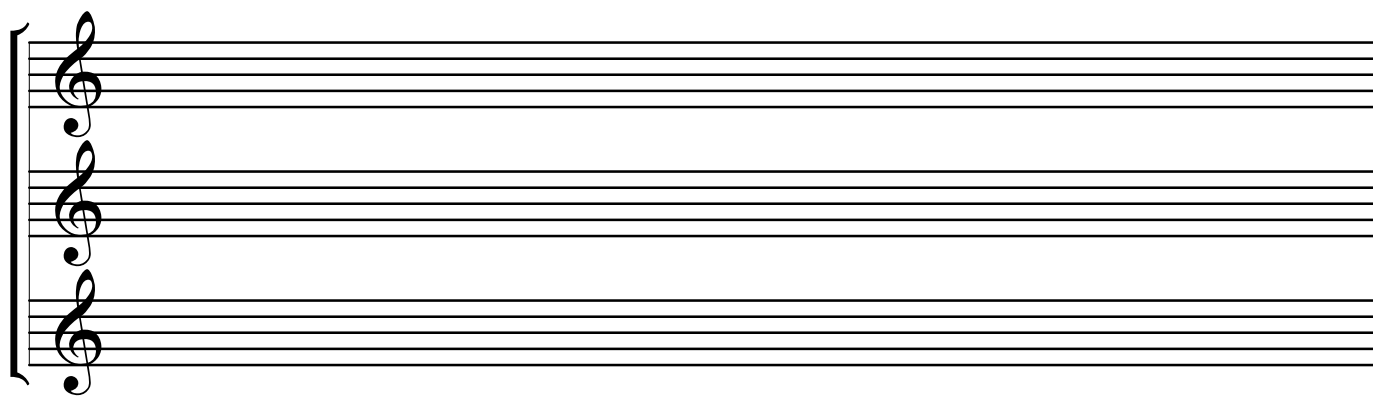
A system of four musical staves. The top two staves are empty. The bottom two staves are connected by a brace on the left and contain a treble clef on the top staff and a bass clef on the bottom staff.

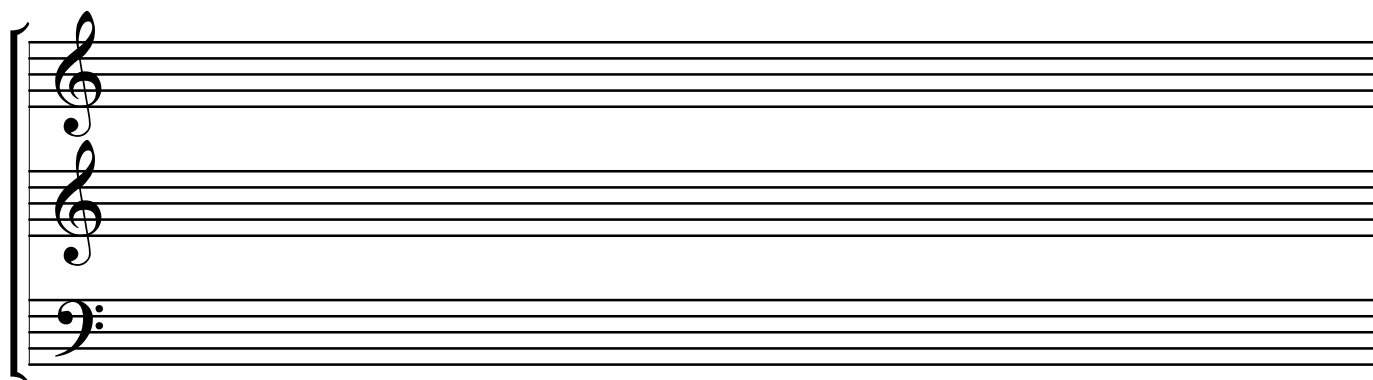
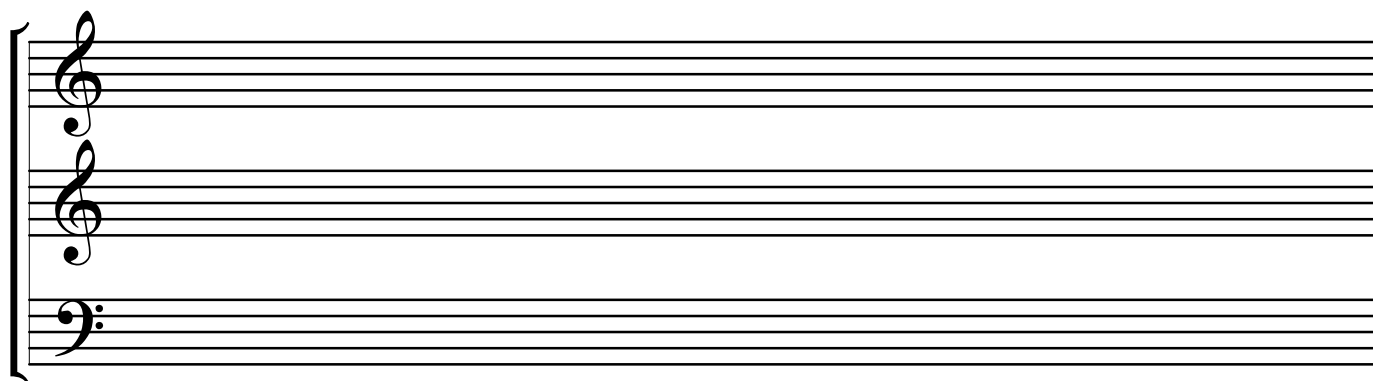
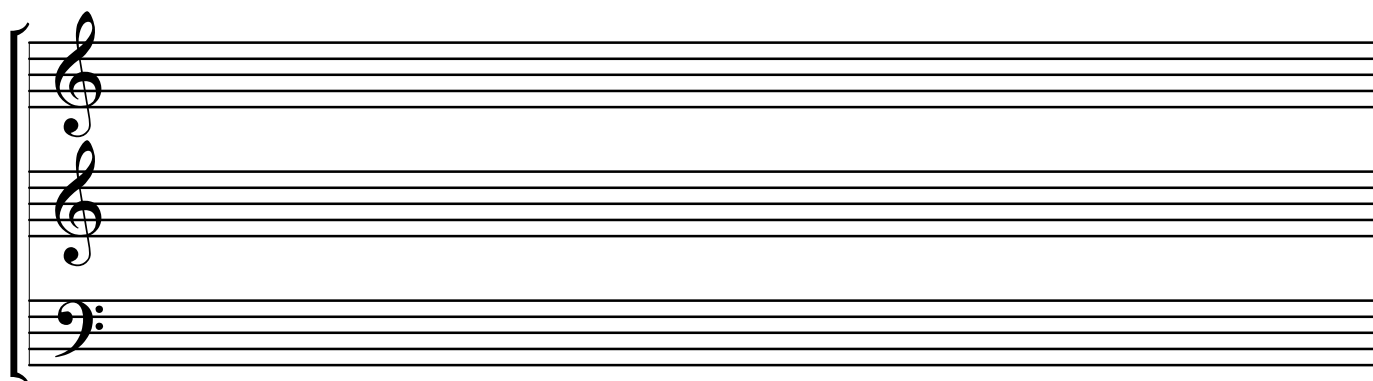
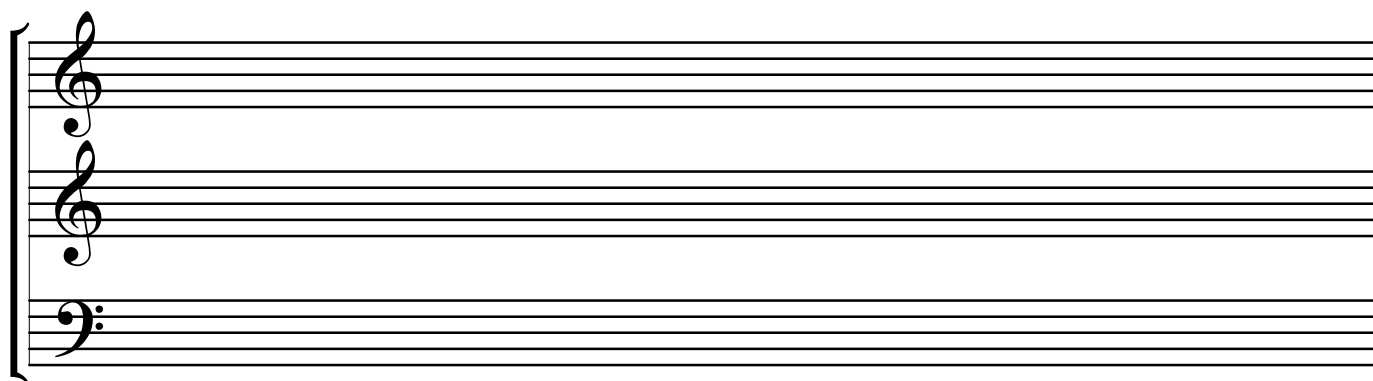
A system of four musical staves. The top two staves are empty. The bottom two staves are connected by a brace on the left and contain a treble clef on the top staff and a bass clef on the bottom staff.

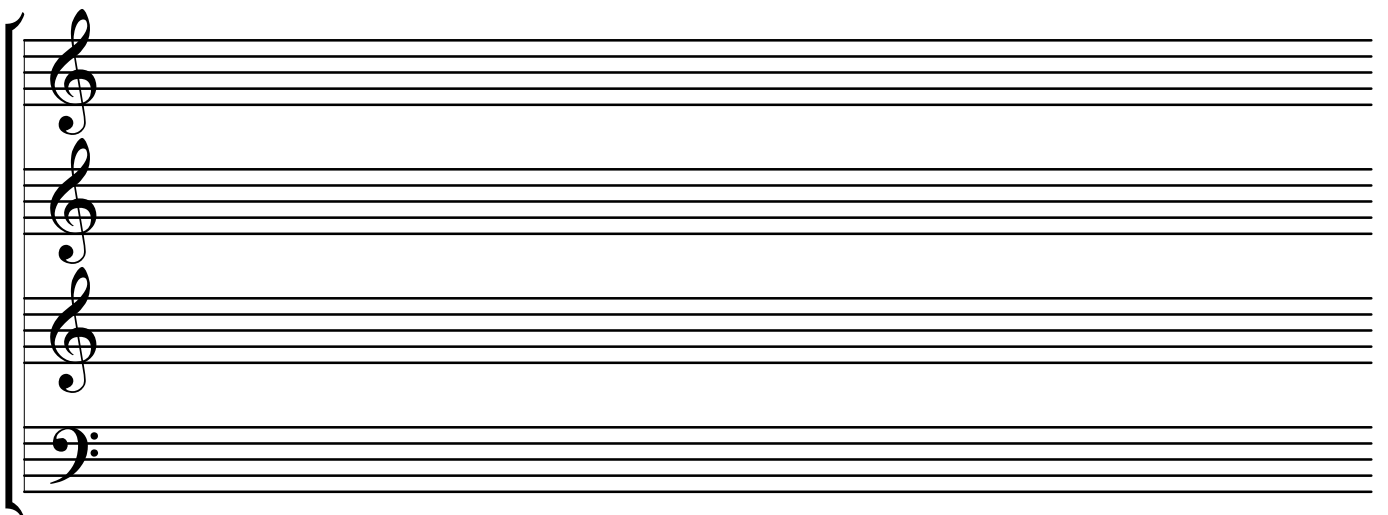
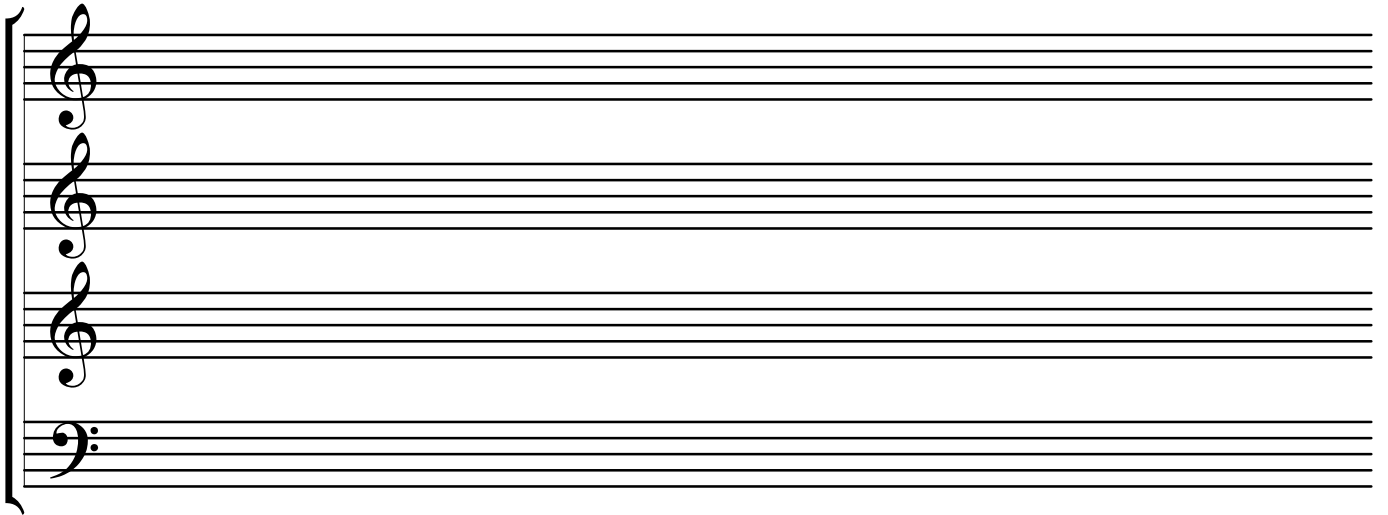
A system of four musical staves. The top two staves are empty. The bottom two staves are connected by a brace on the left and contain a treble clef on the top staff and a bass clef on the bottom staff.

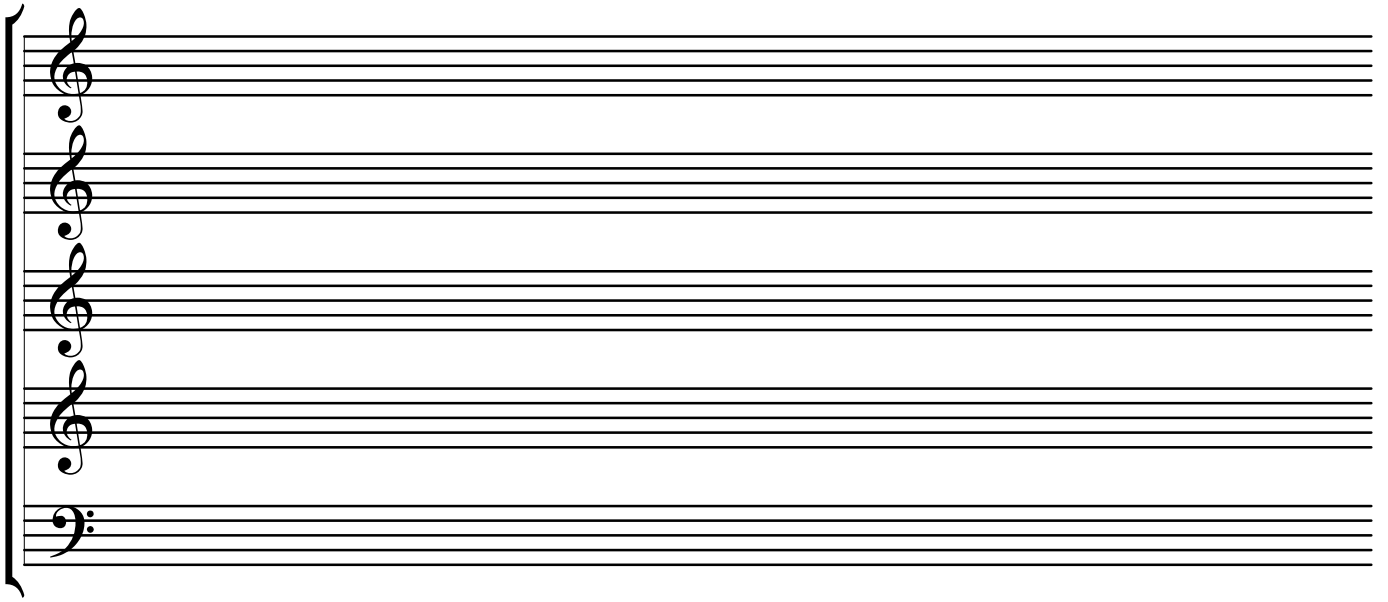




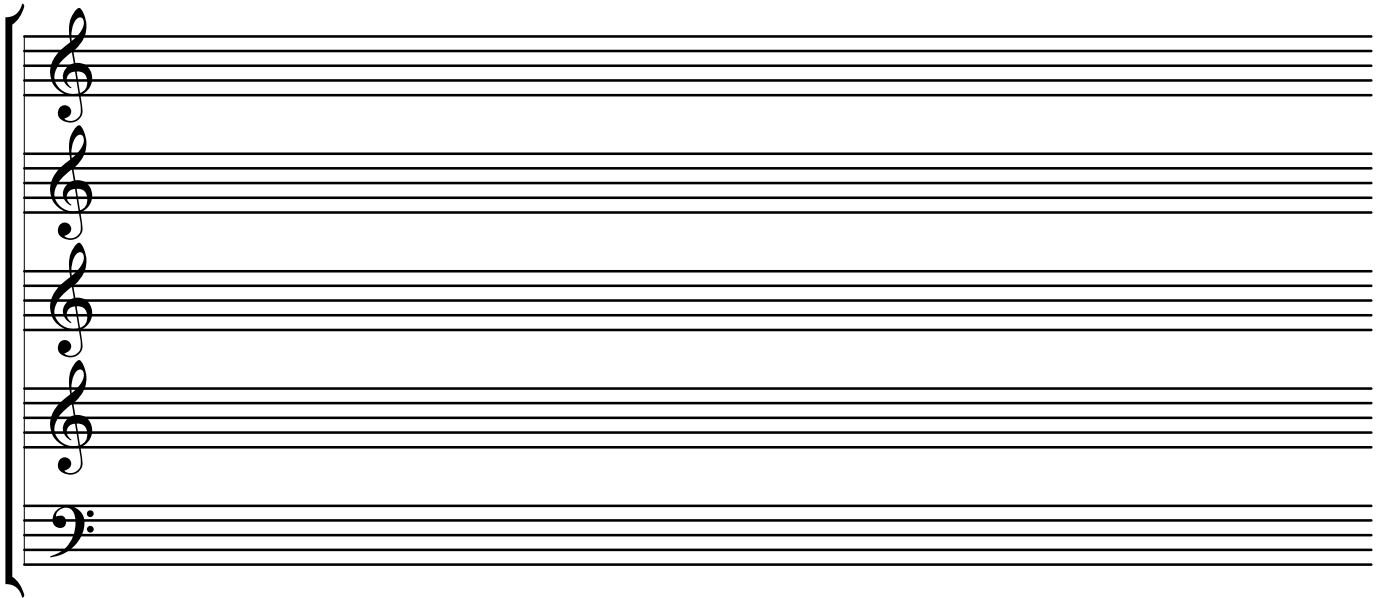




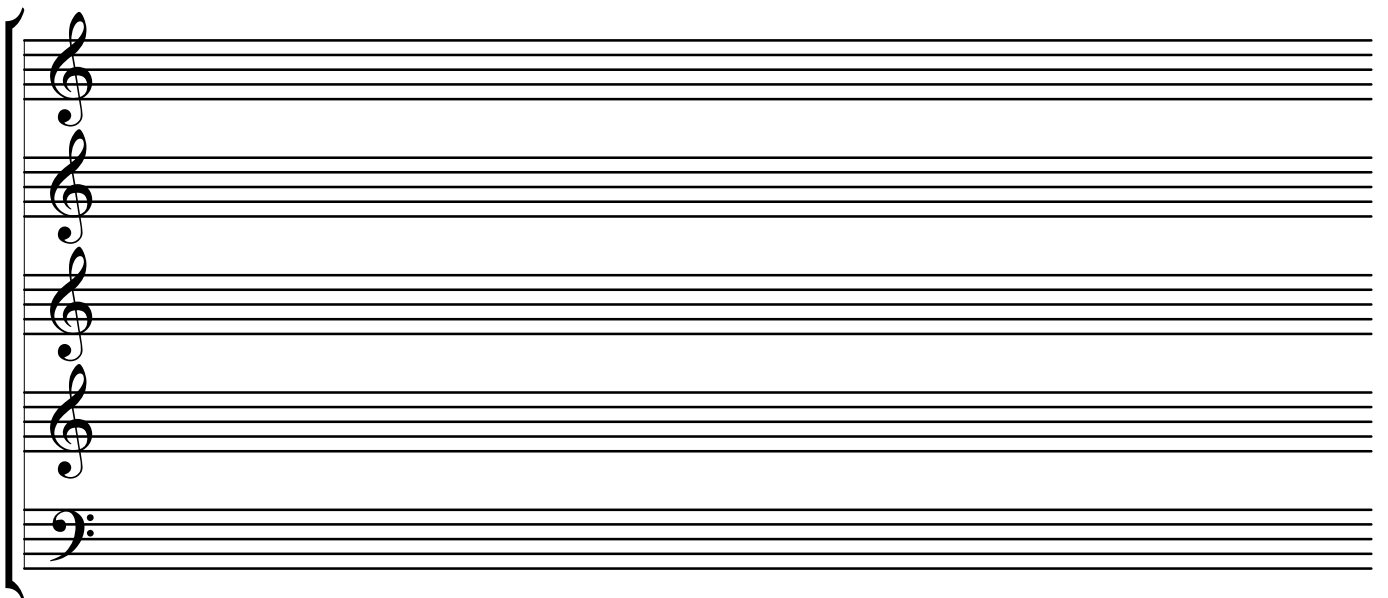




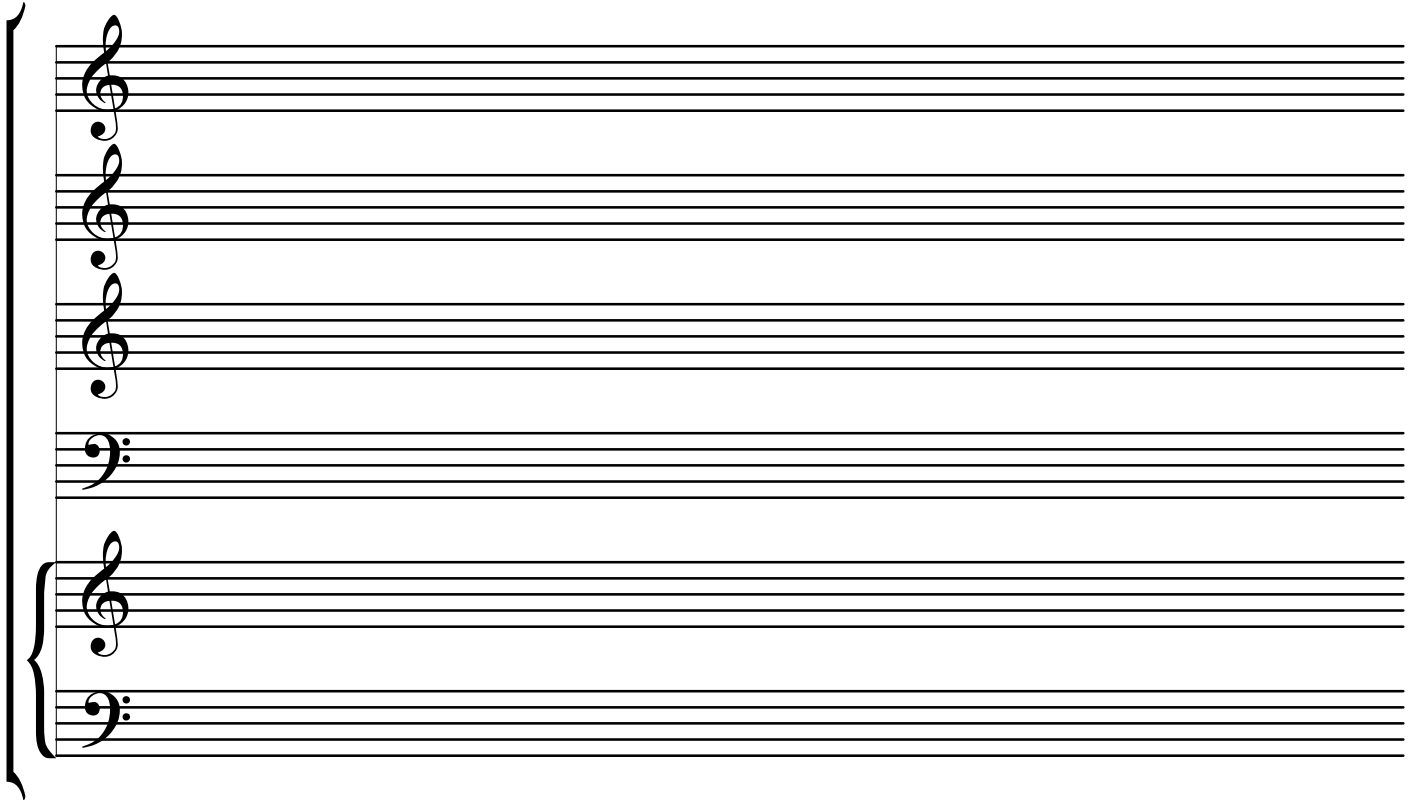
A system of five musical staves. The first four staves are grouped by a brace on the left and each begins with a treble clef. The fifth staff begins with a bass clef. The staves are otherwise empty.



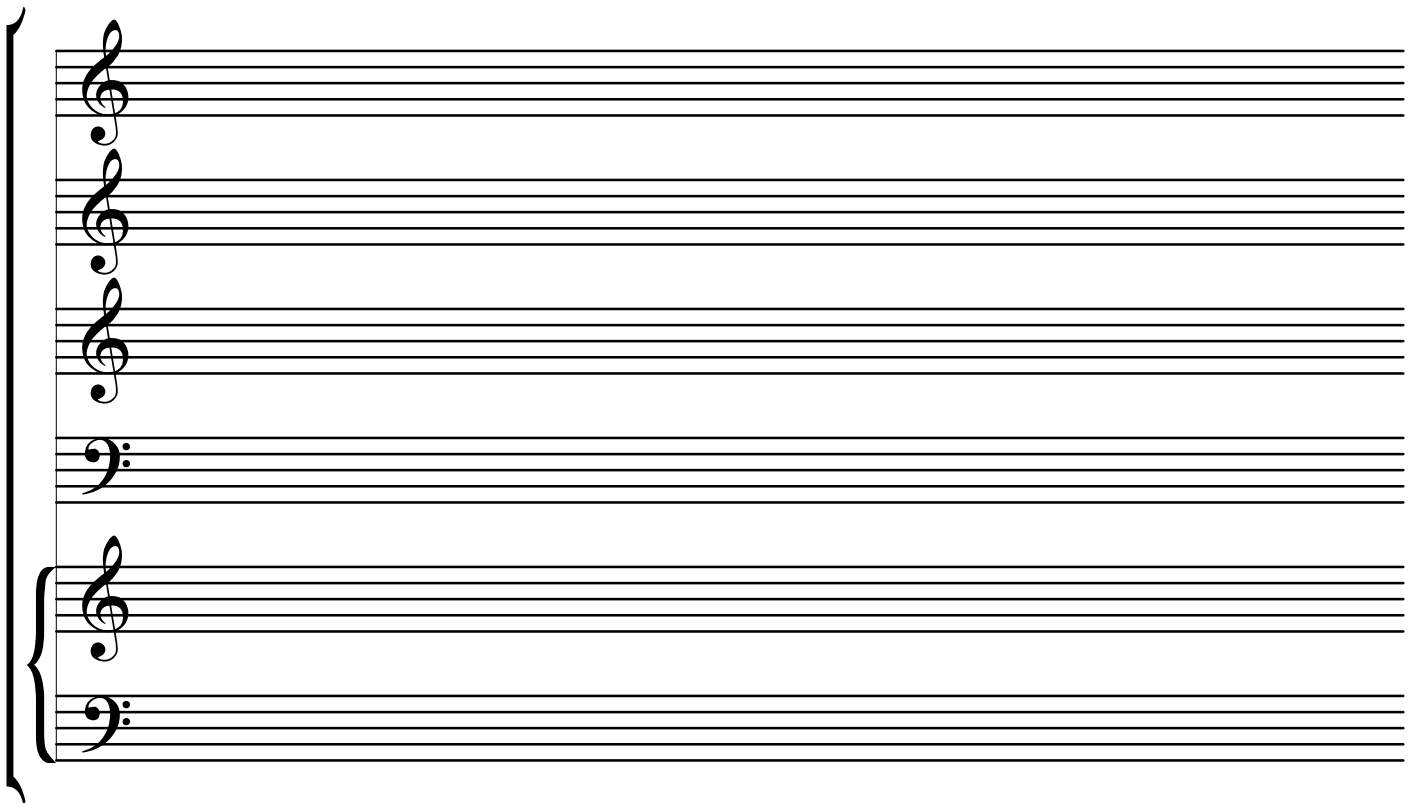
A system of five musical staves. The first four staves are grouped by a brace on the left and each begins with a treble clef. The fifth staff begins with a bass clef. The staves are otherwise empty.



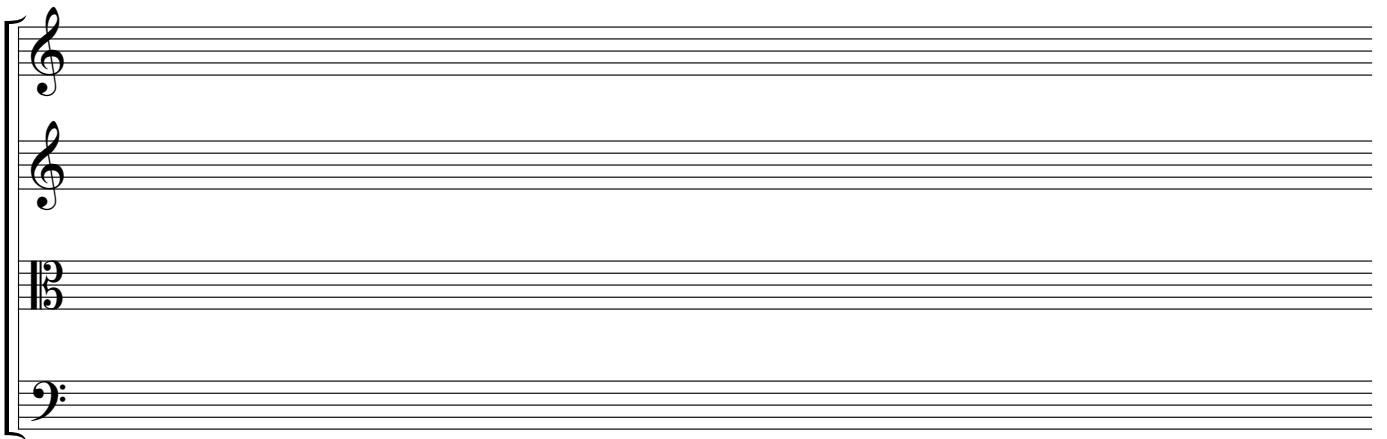
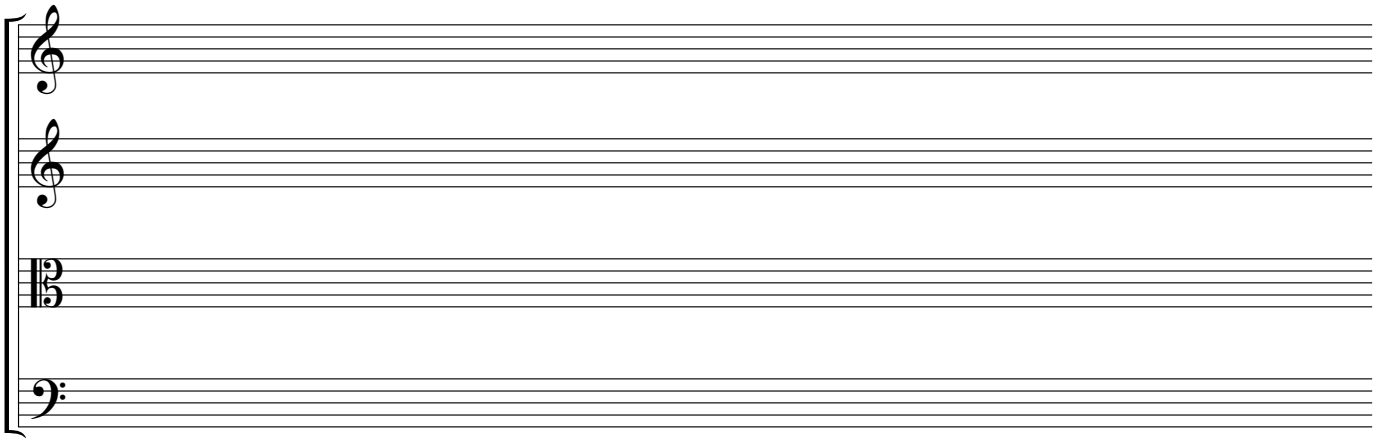
A system of five musical staves. The first four staves are grouped by a brace on the left and each begins with a treble clef. The fifth staff begins with a bass clef. The staves are otherwise empty.



A musical staff system consisting of two systems of staves. The first system has four staves: three treble clefs and one bass clef. The second system has two staves: one treble clef and one bass clef. A large brace on the left side groups all six staves together.



A second musical staff system, identical in structure to the first. It consists of two systems of staves: the first system has four staves (three treble clefs and one bass clef), and the second system has two staves (one treble clef and one bass clef). A large brace on the left side groups all six staves together.



T
A
B

T
A
B

T
A
B

T
A
B

T
A
B

T
A
B

T
A
B

T
A
B

T
A
B

T
A
B

T
A
B

T
A
B

T
A
B

T
A
B

T
A
B

T
A
B

T
A
B

T
A
B

A musical staff with a treble clef on the left. Below the staff, the letters 'T', 'A', and 'B' are stacked vertically, indicating guitar tablature notation.

A musical staff with a treble clef on the left. Below the staff, the letters 'T', 'A', and 'B' are stacked vertically, indicating guitar tablature notation.

A musical staff with a treble clef on the left. Below the staff, the letters 'T', 'A', and 'B' are stacked vertically, indicating guitar tablature notation.

A musical staff with a treble clef on the left. Below the staff, the letters 'T', 'A', and 'B' are stacked vertically, indicating guitar tablature notation.

T
A
B

T
A
B

T
A
B

T
A
B

T
A
B

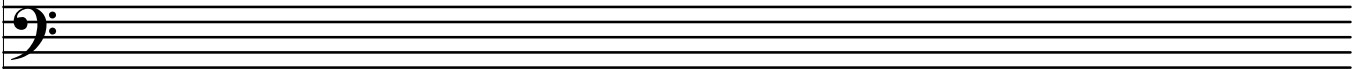
T
A
B

T
A
B

T
A
B



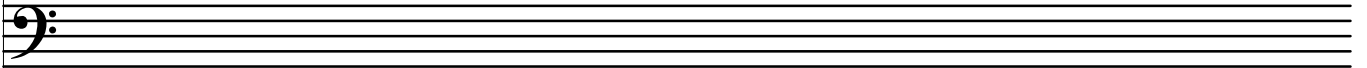
**T
A
B**



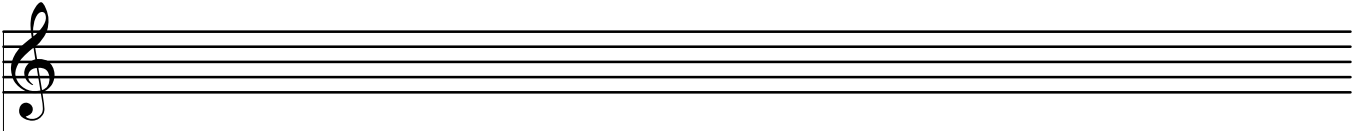
**T
A
B**



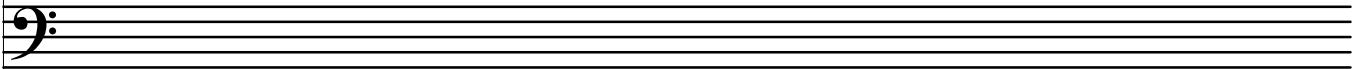
**T
A
B**



**T
A
B**



**T
A
B**



**T
A
B**

A musical staff system consisting of two sets of five-line staves. The top set of staves is empty. The bottom set of staves has a treble clef on the left side. To the left of the bottom set of staves, the letters 'T', 'A', and 'B' are stacked vertically, indicating guitar tablature.

A musical staff system consisting of two sets of five-line staves. The top set of staves is empty. The bottom set of staves has a treble clef on the left side. To the left of the bottom set of staves, the letters 'T', 'A', and 'B' are stacked vertically, indicating guitar tablature.

A musical staff system consisting of two sets of five-line staves. The top set of staves is empty. The bottom set of staves has a treble clef on the left side. To the left of the bottom set of staves, the letters 'T', 'A', and 'B' are stacked vertically, indicating guitar tablature.

A musical staff with a bass clef (F-clef) on the first line. Below the staff is a set of three horizontal lines for guitar tablature, with the letters 'T', 'A', and 'B' stacked vertically on the left side.

A musical staff with a bass clef (F-clef) on the first line. Below the staff is a set of three horizontal lines for guitar tablature, with the letters 'T', 'A', and 'B' stacked vertically on the left side.

A musical staff with a bass clef (F-clef) on the first line. Below the staff is a set of three horizontal lines for guitar tablature, with the letters 'T', 'A', and 'B' stacked vertically on the left side.

A musical staff with a bass clef (F-clef) on the first line. Below the staff is a set of three horizontal lines for guitar tablature, with the letters 'T', 'A', and 'B' stacked vertically on the left side.

A musical staff system consisting of two systems of five-line staves. The top system is empty. The bottom system features a bass clef on the first line, followed by two empty staves. Below the staves, the letters 'T', 'A', and 'B' are stacked vertically, indicating a guitar tablature section.

A musical staff system consisting of two systems of five-line staves. The top system is empty. The bottom system features a bass clef on the first line, followed by two empty staves. Below the staves, the letters 'T', 'A', and 'B' are stacked vertically, indicating a guitar tablature section.

A musical staff system consisting of two systems of five-line staves. The top system is empty. The bottom system features a bass clef on the first line, followed by two empty staves. Below the staves, the letters 'T', 'A', and 'B' are stacked vertically, indicating a guitar tablature section.